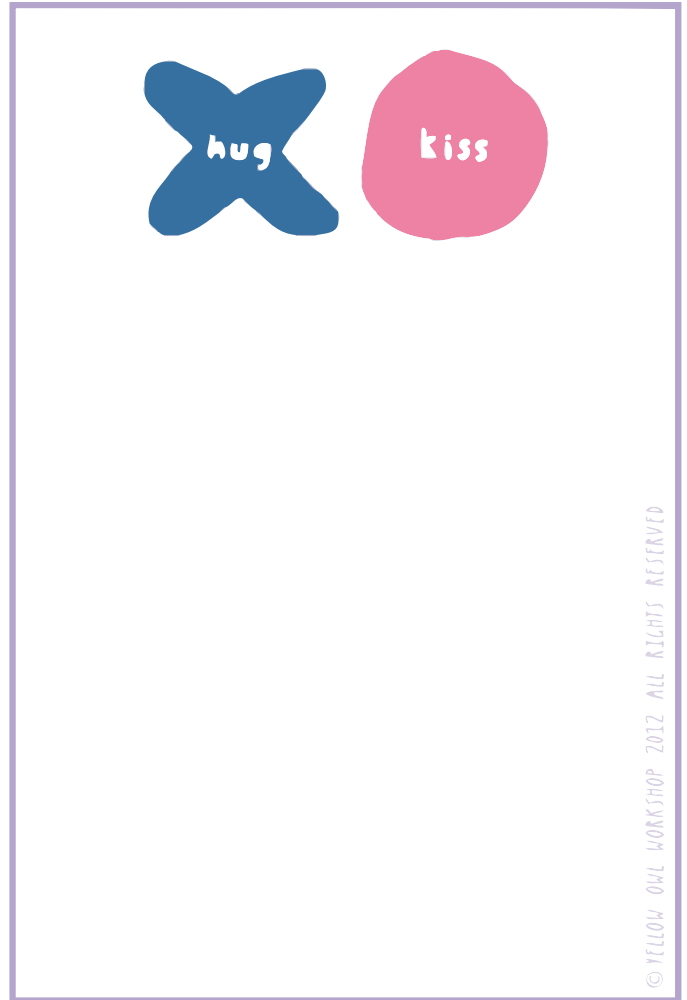
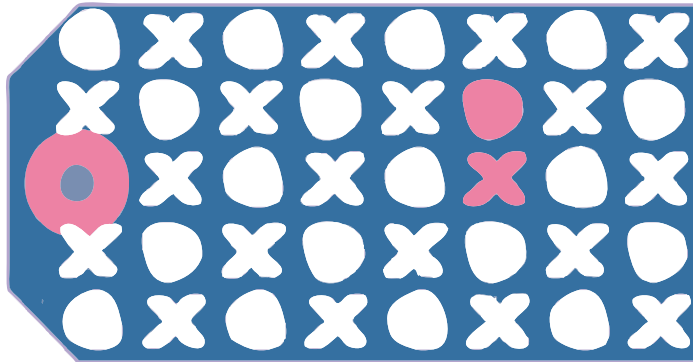
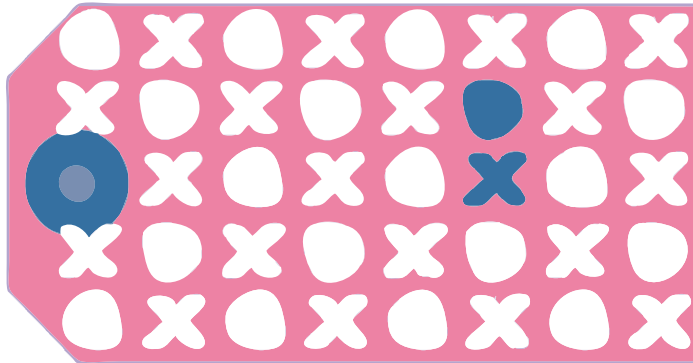




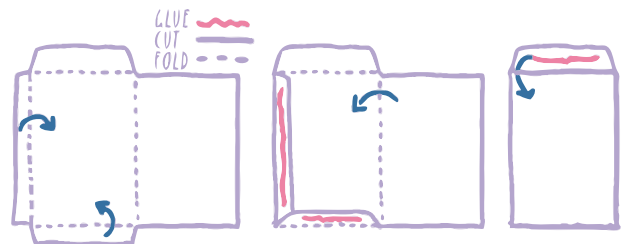
FREE PRINTABLE STATIONERY
 BY YELLOW OWL WORKSHOP
 © 2012 ALL RIGHTS RESERVED
 FOR COOL PRODUCTS AND RUBBER STAMPS
 VISIT: YELLOWOWLWORKSHOP.COM
 FOR COOL PROJECTS PICK UP OUR BOOK
 "PRINT WORKSHOP: HAND PRINTING TECHNIQUES
 AND TRULY ORIGINAL PROJECTS"



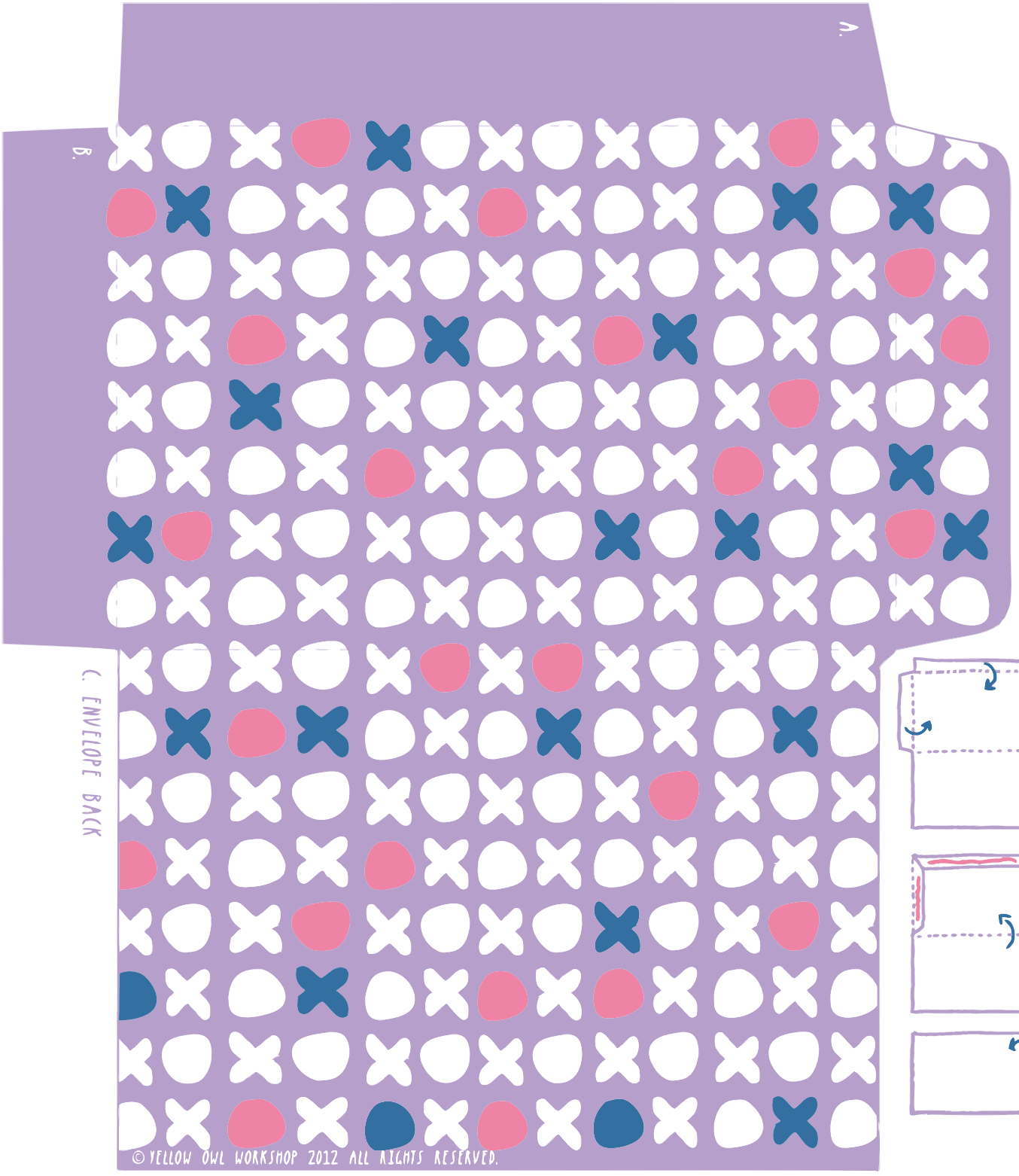
HOW TO MAKE STATIONERY SET

TIP: I LIKE TO PRINT THESE OUT AT THE LOCAL COPY SHOP BECAUSE I DONT WANT TO USE UP ALL MY PRICEY INKJET PRINTER TONER AND THEY HAVE A VARIETY OF COLOR CARDSTOCK OPTIONS.

MATERIALS:
 (2) 8.5 X 11" TEMPLATES (2 PAGES) PRINTED ON CARDSTOCK
 SCISSORS
 CRAFT KNIFE
 RUBBER CEMENT



1. USING SCISSORS OR CRAFT KNIFE TO CUT OUT CARD (TOP RIGHT) OUTSIDE PURPLE LINE + ENVELOPE (NEXT PAGE).
2. USE CRAFT KNIFE TO SCORE ALONG DOTTED LINES OF ENVELOPE.
3. TURN ENVELOPE OVER SO PRINTED DESIGN IS ON BACK.
4. FOLD FLAP A + FLAP B OVER ALONG DOTTED LINE AND CREASE.
5. FOLD FLAP C + FLAP D OVER ALONG DOTTED LINE, CREASE AND UNFOLD.
6. APPLY RUBBER CEMENT TO FLAP A AND FLAP B.
7. FOLD FLAP C OVER FLAPS A + B AND PRESS FIRMLY UNTIL CEMENT SETS.
8. WRITE MESSAGE ON CARD AND PLACE IN ENVELOPE.
9. APPLY RUBBER CEMENT TO FLAP D AND PRESS FIRMLY UNTIL CEMENT SETS.
10. RUB EXCESS RUBBER CEMENT AWAY WITH FINGERTIPS.



D. ENVELOPE BACK FLAP

B.

A.

C. ENVELOPE BACK

